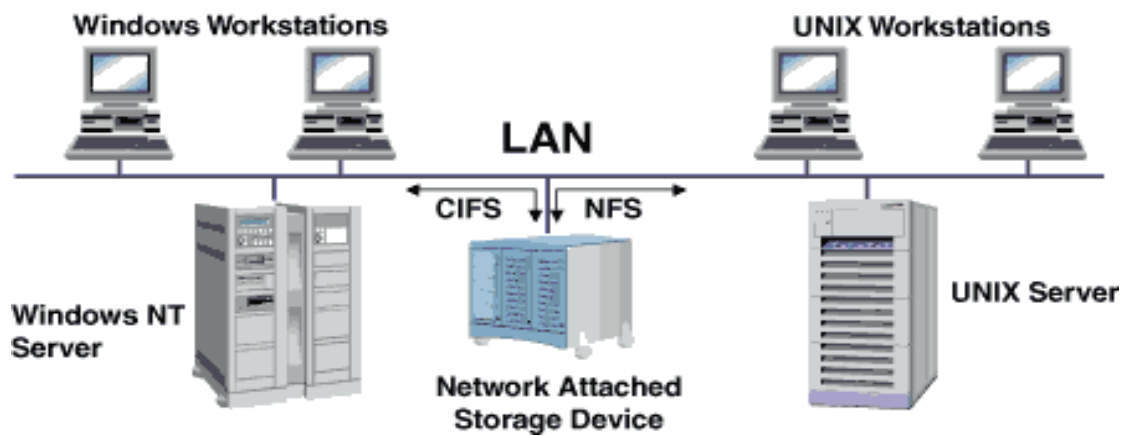


NAS Mode (Network Attached Storage)

Diagram:



Advantage:

1. A lot of users can share different data;
2. Easy to install, manage and debug;
3. Better reliability and effectiveness.

Disadvantage:

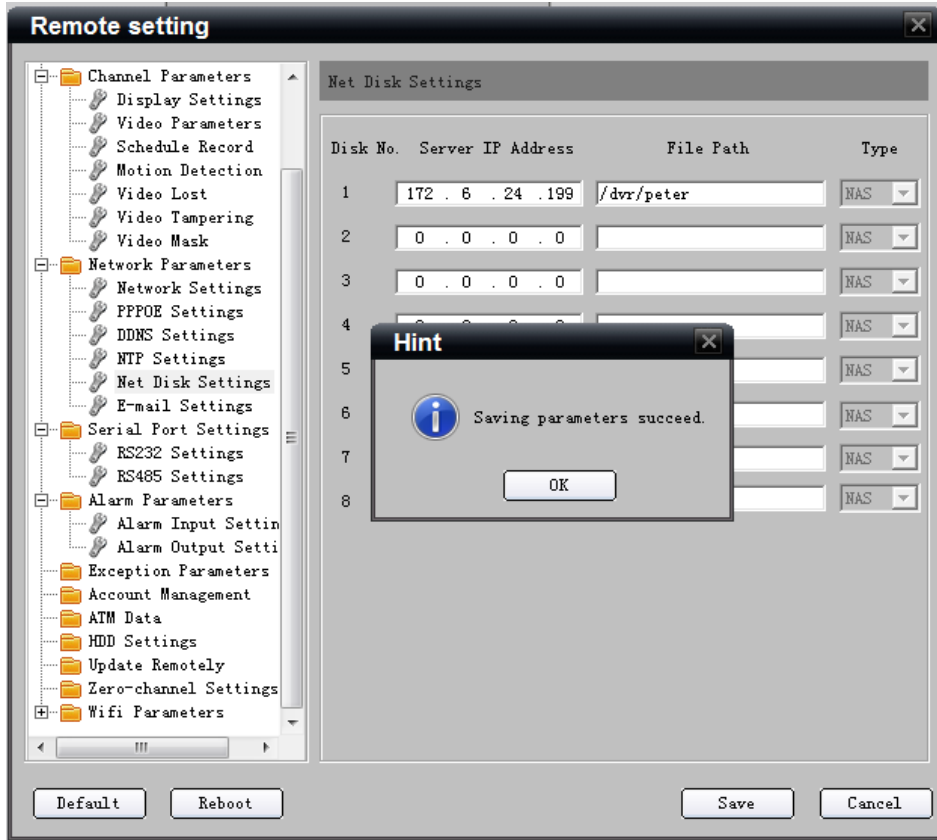
1. Don't support file system;
2. Worse compatibility;
3. Support network hard disk, not SCSI hard disk.

Step one: you need add a network HDD IP Address (There are two methods: one is local DVR; the other is client software)

Network HDD

NetHDD No.	NetHDD No. 1
Type	NAS
NetHDD IP	172 . 6 . 24 . 199
NetHDD Directory	/dvr/peter

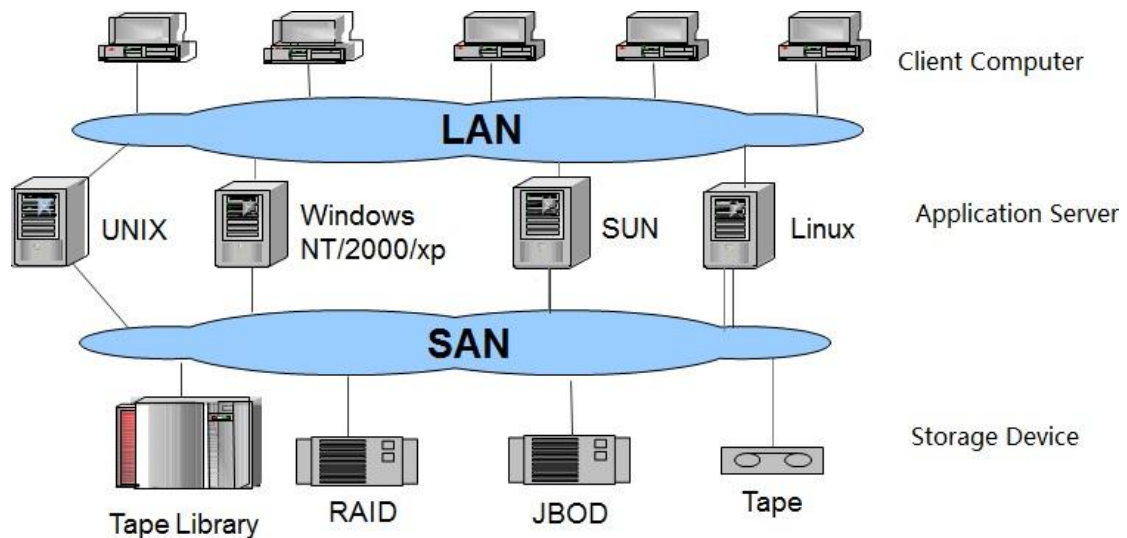
Add Cancel



Theorem: customers input an address and corresponding directory in the DVR, and transmit video stream to remote storage server through network, but please take attention, in that case, our DVR must support NFS protocol which is a standard protocol. If there are few DVRs that want to transmit video stream to this storage server, the whole system may be not steady.

IP-SAN (IP-Storage Area Network)

Diagram:



Theorem: IP-SAN mode, compared with NAS mode, is a steadier system. Customers only need add an Application Server (for example, a PC) additionally, and corresponding steps are as follows:

- (1) The application server runs NVR Server software;
- (2) The application server adds our DVRs in NVR Server software;
- (3) When DVR is recording, the video stream transmits application server firstly;
- (4) The application server forwards the video stream to storage server.

mode parameter	NAS	IP-SAN
Scalability of capacity	Good	Better
Scalability of distance	Good	Better
Management	Yes	Yes
Price	Low	Low