

DSFilters

User Manual

V4.9.6.4

2009-11-06

Thank you for purchasing our product. If there is any question or request, please feel free to contact us.

This Manual is for **DSFilters player plug-in**.

This manual may contain several technically incorrect places or printing errors, and the content is subject to change without notice. The updates will be added into the new version of this manual, and we will readily improve or update the product or procedure described in the manual.



Index

Chapter 1 Product Description	1
Chapter 2 Version Update	2
Chapter 3 Installation	3
3.1 Installation Steps	3
3.2 Components & Registration	6
Chapter 4 Operation Guide	7
4.1 File Playback	7
4.2 Network Stream Playback	7
4.2.1 Network Stream from Card Server	7
4.2.2 Network Stream from Standalone Devices	8
4.2.3 Connect via Stream Media Server	8
Chapter 5 FAQ	11



Chapter 1 Product Description

DSFilters player plug-in is a COM component developed based on Microsoft® DirectShow® technology, and it can be used to extract, analyze and decode digital video/audio signals from Hikvision devices. Users can playback Hikvision format media files and streams via standard players such as Windows Media Player.



Chapter 2 Version Update

V4.9.6.4 (2009-11)

Support video from DS-9000/DS-9100 series devices.

Support video from DS-8100/DS-7100 series devices.

Support video from Hikvision IP cameras.

Note: Stream media mode for DS-9000/9100/8100/7100 is not supported currently.

V4.9.0.0

Support Network streaming or VOD mode.

Canceled JVT stream.

Standardized the file names and registering names for filter components.



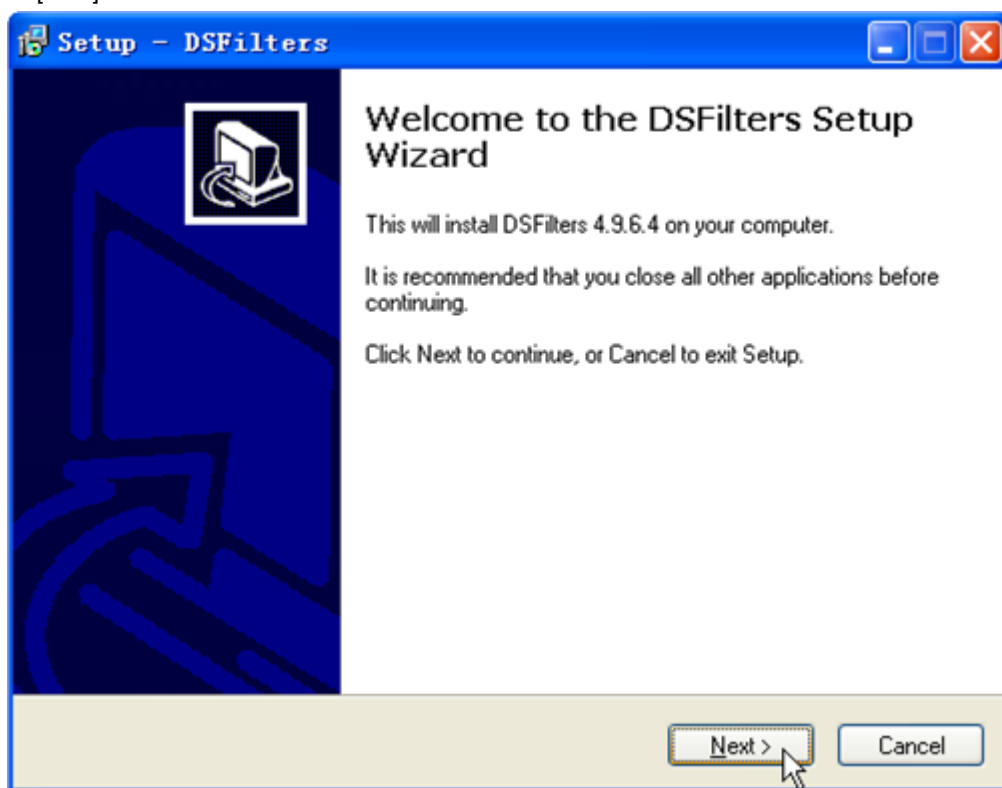
Chapter 3 Installation

3.1 Installation Steps

Step 1: Double click “DSFilters_setup.exe” to execute the setup program.

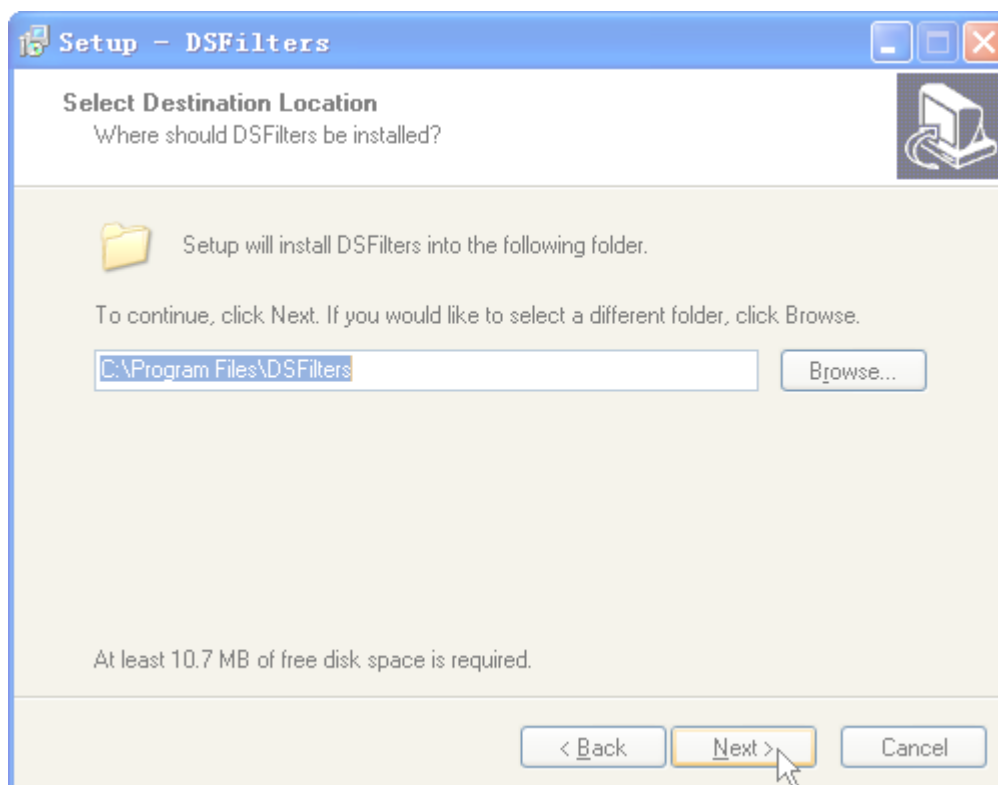


Step 2: Click [Next].

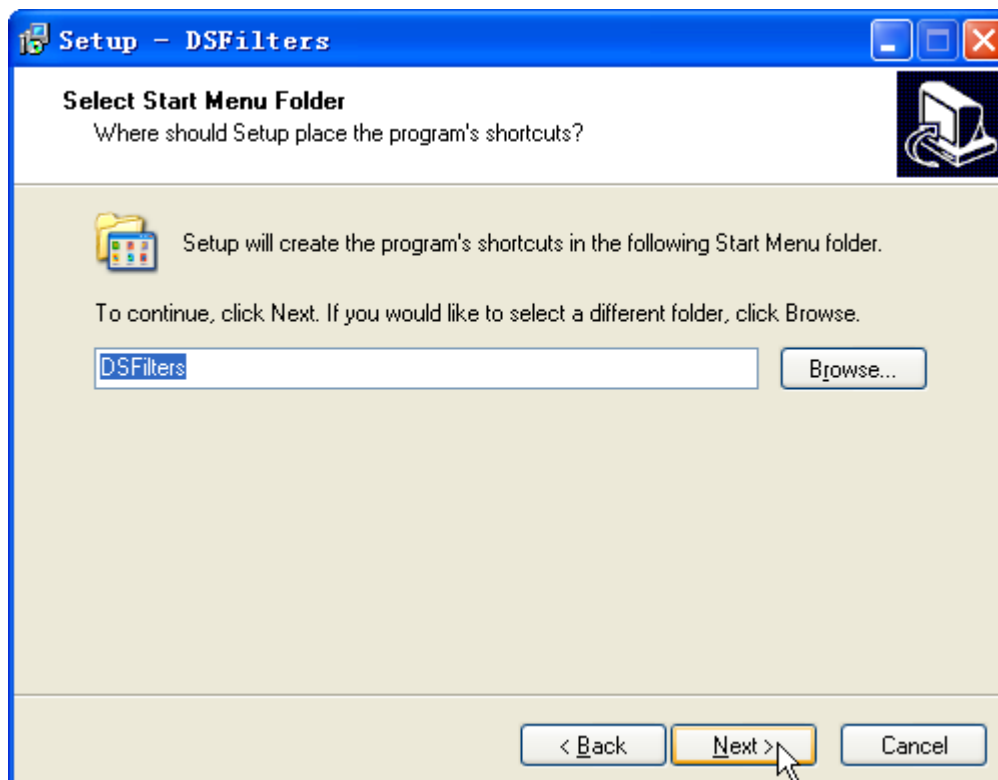


Step 3: Select installation path.



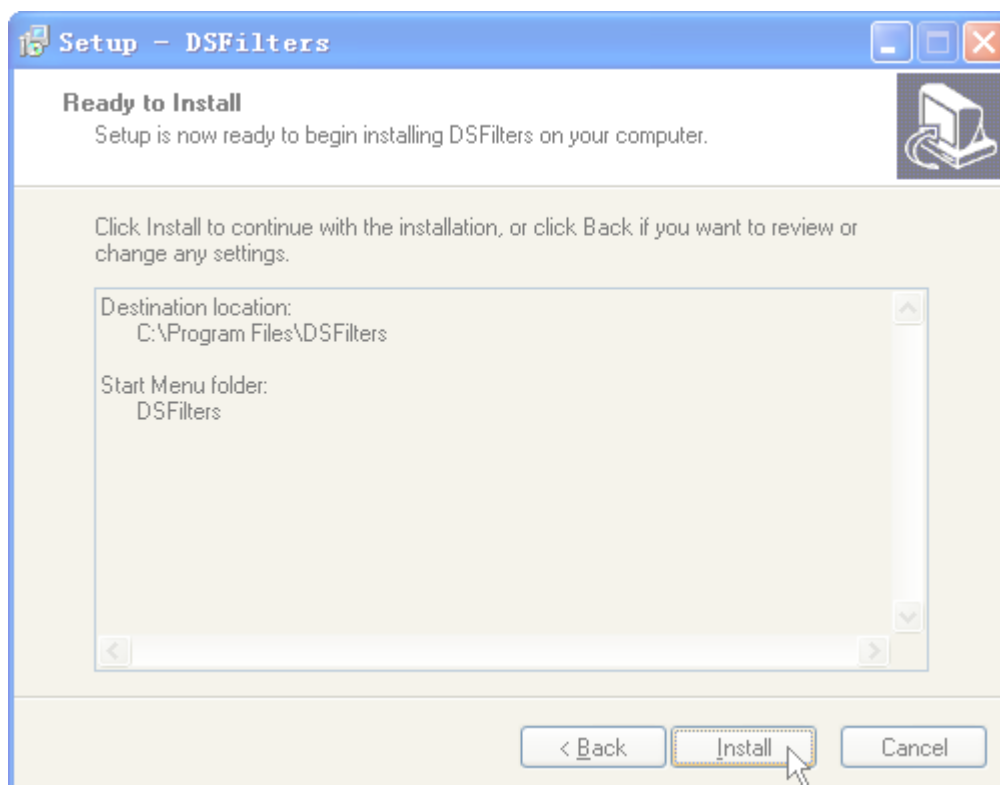


Step 4: Click [Next].

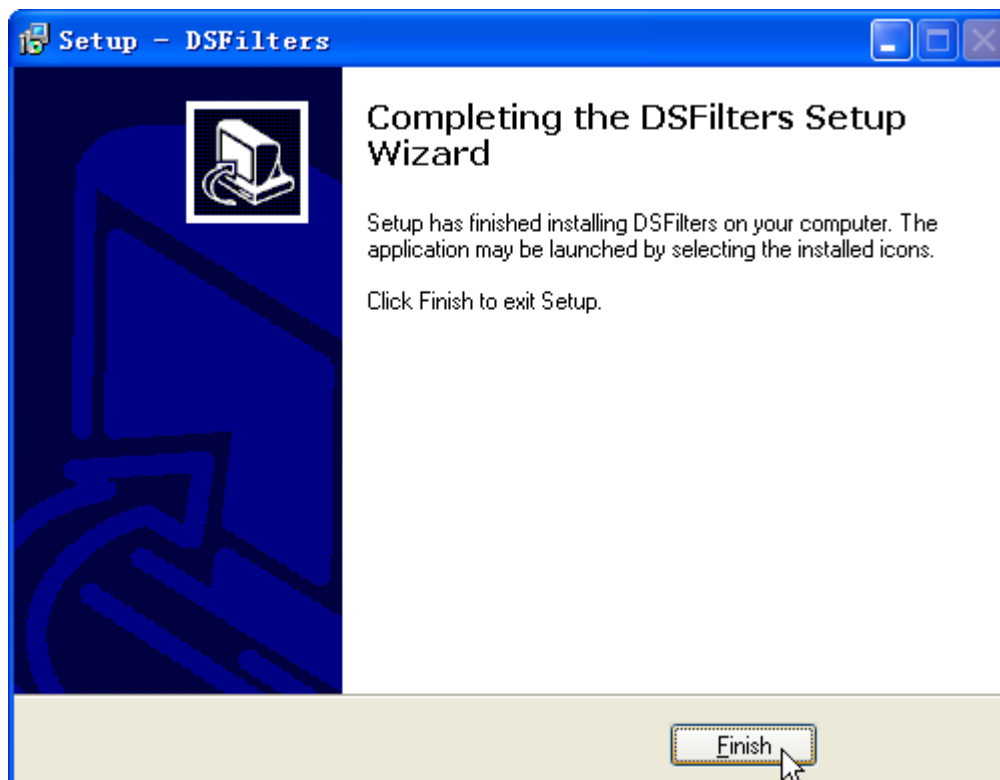


Step 5: Select [Install].





Step 6: Select [Finish] after installation complete.



3.2 Components & Registration

Users can install the filter by the setup program as section 3.1 described, or get all the components and make an installation package themselves. Please kindly notice that users need to register all the “.ax” files and the registration may not succeed if the relative files are missed for the “.ax” files.

Registration steps:

Click “Start”->”Run” in Windows task bar, input ‘regsvr32 *path/file_name*’ and click [OK] to execute the registration.

Component & Function Description

Component	Function	Relative Files
DSPushSource.ax	Local file loader	--
DSNetSplitter.ax DSPSSplitter.ax	Audio/Video separator Audio/Video separator for PS files/stream	--
DSH264Dec.ax DSMpeg4Dec.ax	Video decoder	DEC_StdMpeg4.dll
DSAUDIODec.ax	Audio decoder	--
DSDataDump.ax	Data Dump	--
DSNetSource.ax	Network Streaming components	client.dll DsSdk.dll HCNetSdk.dll PlayM4.dll PlayCtrl.dll hikclient.dll DS40xxSDK.dll SystemTransform.dll@ DataSync.dll@ gdiplus.dll @ StreamTransClient.dll @ msvcr71.dl * mfc71.dll * msvc71.dll*

Note: The .dll files with ‘@’ should be placed under System32 directory. If the latest version Microsoft .Net FrameWork is not installed on the PC, then the files with ‘*’ will be necessary.



Chapter 4 Operation Guide

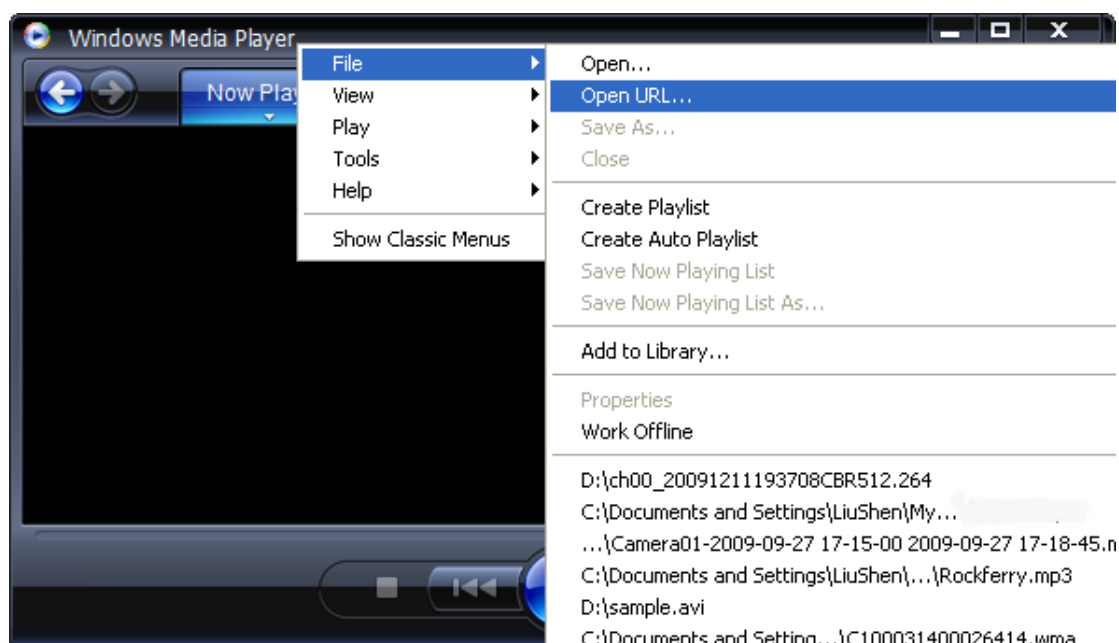
4.1 File Playback

Users can playback Hikvision format video files in Windows Media Player directly after install DSFilters.

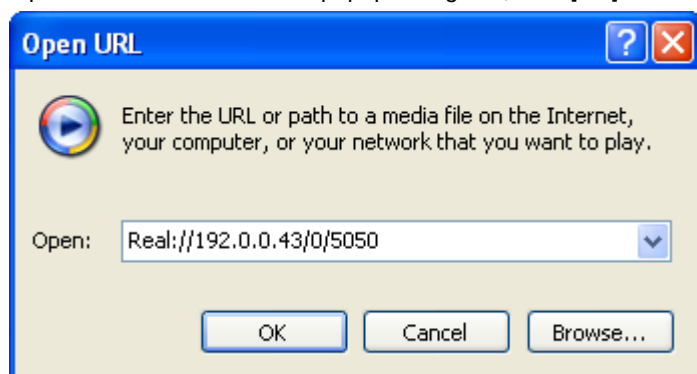
4.2 Network Stream Playback

Users can use URL mode of Windows Media Player to visit and playback network stream from Hikvision card and standalone devices.

Open Windows Media player, right click and select [Open URL].



Input the URL address in the popup dialog box, click [OK] and start network streaming.



4.2.1 Network Stream from Card Server



Users can visit Hikvision Card Server (With Hikvision Card Network SDK, i.e. Demo application “Net Server.exe” in the Hikvision Card SDK package) via network stream mode after DSFilters installation.

URL Format:

Real://IP Address/Port Number/5050

Note: “Real” starts with capital letter.

Sample:

Real://192.0.0.43/0/5050

4.2.2 Network Stream from Standalone Devices

4.2.2.1 Real Time network Stream for Hikvision DVR/DVS/IPC

Connect Hikvision DVR/DVS/IPC and get remote live view stream via network.

URL Format:

ntrt://Device IP/Camera Number/Port Number/User Name/Password/Stream Type

Note: Stream type 0: Main stream: 1: Sub Stream

Sample:

ntrt://192.0.0.43/1/8000/admin/12345/0

ntrt://192.0.0.43/1/8000/admin/12345 (Note: connect main stream by default)

4.2.2.2 Remote Video Playback for Hikvision DVR/DVS/IPC

Playback the files stored in Hikvision DVR/DVS/IPC via network.

URL Format:

ntfl:// Device IP/Camera Number/Port Number/User Name/Password /File Name

Sample:

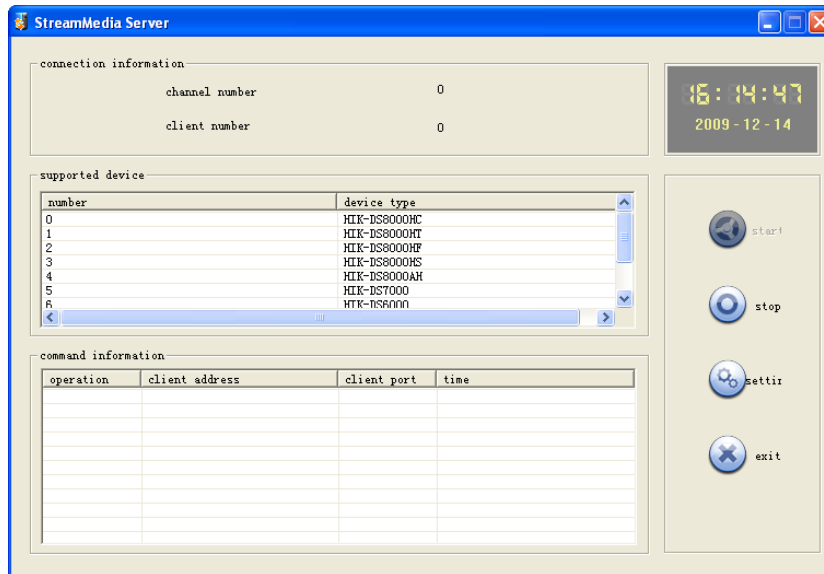
ntfl://192.0.0.43/1/8000/admin/12345/ch01_00000000000000

4.2.3 Connect via Stream Media Server

Users need to run stream media server software under this connection mode. The stream media server can be downloaded from our website together with iVMS-4000 Software. For the stream media server settings, please kindly refer to the user manual of stream media server.

Software Interface of Stream Media Server:





4.2.3.1 Network Stream from Card/Standalone Devices

Users need to setup a stream media server on the network for this connection mode.

URL Format:

svrt:// Stream Media Server IP/Device IP:Port Number:Device Model:Camera Number:Stream Type:UserName:Password/av_stream

Note:

Device Model:

HIK-DS8000HC: 8000/7000/6000/IPC/IP Speed Dome

HIK-DS8000ME: Hik-ME series devices

HIK-Cards: Card Server developed with Hikvision card network SDK(i.e. Net Server Demo)

Stream Type:

0: main stream; 1: Sub Stream

Note:

Does not support stream from DS-9000/9100/8100/7100, and sub stream of Card server currently.

Sample:

svrt://192.0.0.43/192.0.0.111:8000:HIK-DS8000HC:0:0:admin:12345/av_stream

4.2.3.2 Playback Video Stored in PC

Users need to setup a stream media server on the network, import Hikvision video files and create index on the [Config] menu before starting video playback. Please refer to VOD mode description of Hikvision Stream Server User Manual.

VOD Configuration Interface on Stream Media Server



setting

port

listening 554

VOD

relative path

path C:\Video browse

media file	index file
CBR512.264	exist
VBR.264	exist

generate delete refresh

OK cancel

URL Format:

svfl://PC IP/File Name

Sample:

svfl://192.0.0.43/video_sample.264

4.2.3.3 Playback Video Stored in the Devices

Note: This function is only valid for some devices with stream media server embedded.

URL Format:

svfl://Device IP/File Name

Sample:

svfl://192.0.0.43/video_sample.264



Chapter 5 FAQ

1. Install Failure

As the DSFilters is developed based on DirectX, it is required to install DirectX in the operating system (DirectX has already been embedded in Windows XP OS). If the filter cannot be installed successfully, please re-install DirectX, and enable COM component in system services.

2. Registration Failure for '.ax' files

The .ax files should be placed with the relative ".dll" files together in the same directory. If the .ax file's directory has been changed, then the user needs to register this component again. Please kindly notice that it is suggested to put the registration files under a pure English directory, and the dlls marked with '@' in the above content should be placed in "system32" directory.

3. Playback Failure after Filter Installation

The filter only supports all Hikvision default/baseline products and does not support other CODEC or packaging format.

4. Video & Audio File/Stream Playback Failure (Pure video file/stream can be playback successfully)

The sound card driver has not been installed (frequently happen in Windows 2003)

5. Playback Speed Abnormal

Frame rate information contained in the video is not consistent with the actual recording frame rate.

6. Live View Failure for Hikvision Card Stream

Common reasons:

- A. Card Server has not been running
- B. "Real:\\" from the URL should begin with a capital letter 'R'.
- C. Sub stream from the card server is not supported currently.

7. Cannot Playback via Stream Media Server

Common reasons:

- A. Stream Media Server is not running, i.e. for URL:
svrt://192.0.6.150/192.0.4.85:8000:HIK-DS8000HC:0:0:admin:12345/av_stream, users need to setup a stream Media Server on 192.0.6.150
- B: Device model error, i.e. select 'HIK-DS8000HC' mode for Hikvision card will cause a playback failure via Stream Media Server.
- C: Has not created index for the video files, i.e. for URL "svfl://192.0.6.150/stream.264", users need to create "stream.index" via stream Media Server configuration, and use relative path on the Stream Media Server.

8. Network Playback Failure (Direct Connection Mode)

Please ping the devices and check if the network connection works normally.

