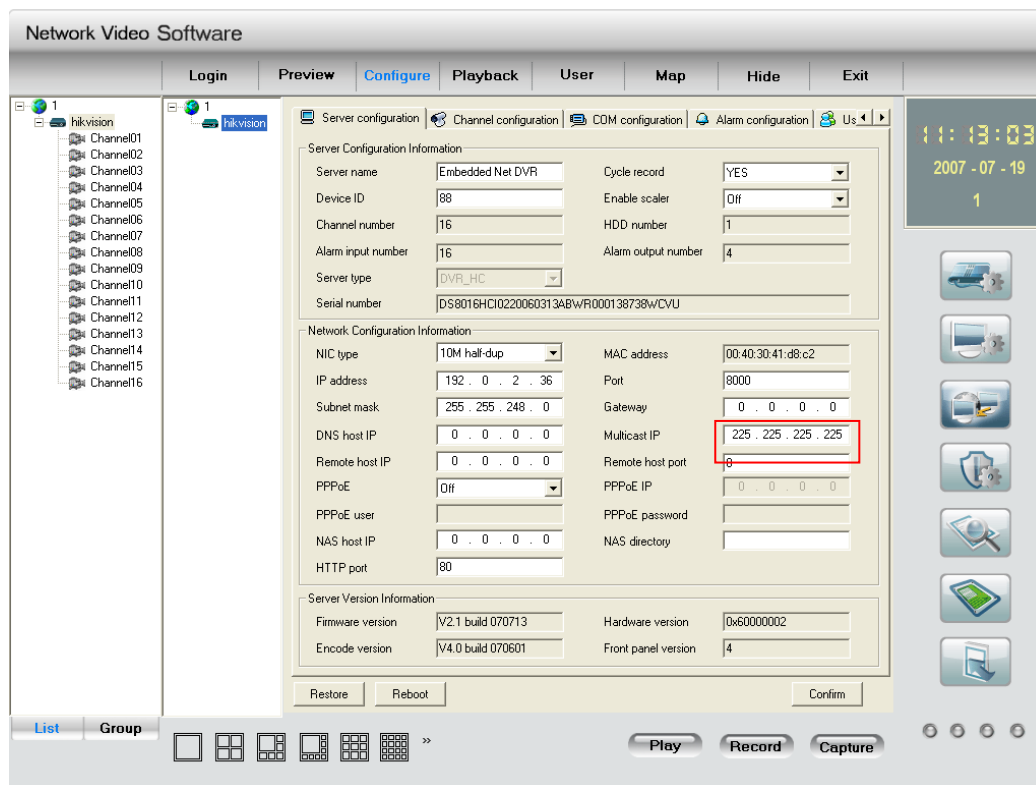


Multicast must be used with Client Software. And the network must support Multicast as well.

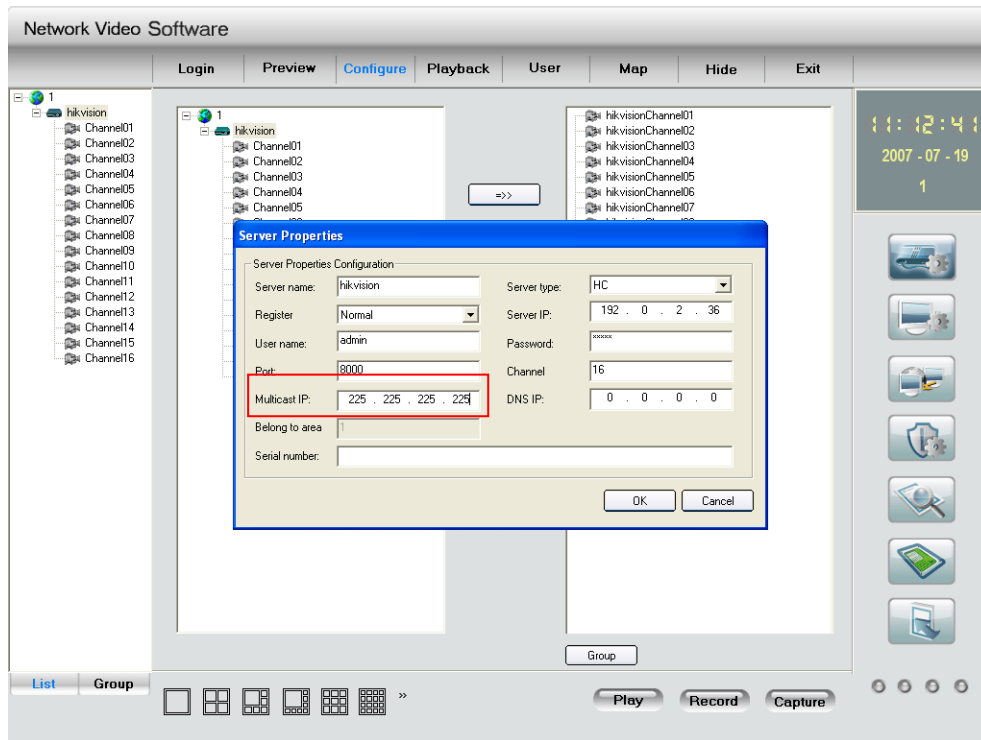
### Step1,

Enter into remote configuration interface of the DVR/DVS/IPC. Input multicast IP. The correct Multicast IP should be in the range of 224.0.0.0 to 239.255.255.255. Click OK, save parameters. And reboot the DVR/DVS/IPC.



### Step 2.

Click the "configure" and double click one Device, in the multicast IP option, input the same multicast IP as the device and click OK.



### Step 3.

Double click the channel and change the protocol to MCAST. The step should be repeated for every channel which is wanted to use the multi-cast function.

