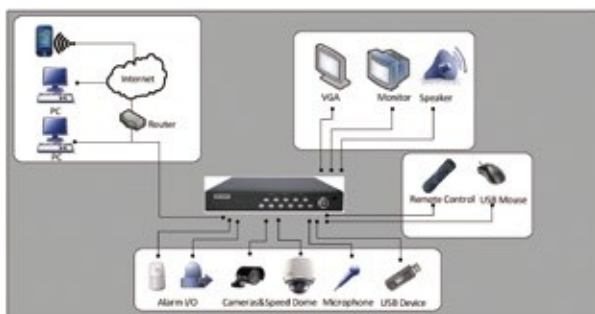


## DS-7204HVI-S Standalone DVR



### Key Features

- Each channel supports up to 4CIF recording and CIF real time recording
- Dual stream
- VGA output
- 1 SATA interface
- Support main and auxiliary video output
- Up to 4-ch synchronous playback



### Specifications

		DS-7204HVI-S
Video/Audio input	Video compression	H.264
	Video input	4-ch
	Video input interface	BNC(1.0Vp-p, 75Ω)
	Audio compression	OggVorbis, 16Kbps
	Audio input	1-ch
	Audio input interface	RCA (2.0Vp-p, 1KΩ)
Video/Audio output	Voice talk input	1-ch, (Using Audio IN)
	Preview resolution	4CIF (PAL: 704x576, NTSC: 704x480)
	VGA output	1 VGA interface can support resolution: 1024*768/60Hz
	Recording resolution	4CIF/DIF/2CIF/DCIF/QCIF
	Video output	1-ch, BNC(1.0Vp-p, 75Ω)
	Video spot out	1-ch, BNC(1.0Vp-p, 75Ω)
	Frame rate	4CIF: 6fps, DCIF: 12fps, 2CIF: 12fps CIF: 25(P)/30(N) fps
	Stream type	Video/Video&Audio
	Support dual stream	Yes
	Video bit rate	32Kbps~2Mbps, or user-defined (Max. 8Mbps)
Hard disk driver	Audio output	1 channel, RCA (2.0Vp-p, 600Ω)
	Interface type	1 SATA interface
External interface	Capacity	Up to 2TB capacity
	Communication interface	1 RJ45 10M/100M adaptive Ethernet interface 1 RS-485 interface (T+, T-, R+, R-)
	USB interface	1 USB interface, can support USB disk, USB HDD, USB DVD-R/W and CD-R/W
	Alarm input	4-ch
	Alarm output	1-ch
General	Power supply	12VDC
	Consumption	≤20W (without HDD)
	Working temperature	-10°C~+55°C(14°F~131°F)
	Working humidity	10%~90%
	Dimension	315(W)x230(D)x45mm(H)(12.40"(W)x9.06"(D)x1.77"(H))
	Weight(without HDD)	≤2800g(6.17lbs)

## DS-7208/7216HVI-S Standalone DVR



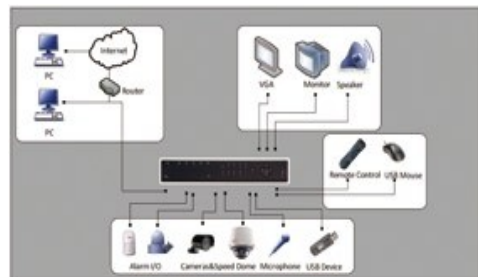
DS-7208HVI-S



DS-7216HVI-S

### Key Features

- Each channel supports up to CIF real-time encoding
- VGA output
- 2 SATA interface
- DS-7208HVI-S support dual stream



### Specifications

		DS-7208HVI-S	DS-7216HVI-S
Video/Audio input	Video compression	H.264	
	Video input	8-ch	16-ch
	Video input interface	BNC(1.0Vp-p, 75Ω), PAL/NTSC adaptive	
	Audio compression	OggVorbis, 16kbps	
	Audio input	4-ch	
	Audio input interface	RCA (2.0Vp-p, 1KΩ)	
Video/Audio output	Voice talk input	1-ch, (Using Audio IN)	
	Preview resolution	PAL: 704×576, NTSC: 704×480	
	VGA output	1 VGA interface can support resolution: 1024×768/60Hz	
	Recording resolution	CIF/QCIF	
	Synchronous Playback	2-ch	2-ch
	Video output	2-ch, BNC(1.0Vp-p, 75Ω)	
Hard disk driver	Video loop output	8-ch, DB15 (Optional)	16-ch, DB15 (optional)
	Frame rate	PAL: 25fps, NTSC: 30fps	
	Video bit rate	32Kbps~768Kbps, or user-defined	
	Audio output	1-ch, RCA(linear electrical level, 600Ω)	
	Interface type	2 SATA interface	
	Capacity	Each interface supports up to 2TB capacity	
External interface	Network Interface	1, RJ45 10M/100M adaptive Ethernet interface	
	Serial Interfaces	1 RS-232 interface (for parameters configuration, maintenance, transparent channel); 1 RS-485 interface (for PTZ control);	
	USB interface	2, USB2.0	
	Alarm input	16-ch	
General	Alarm output	4-ch	
	Power supply	12VDC	
	Consumption	≤20W (without HDD or DVD-R/W)	≤30W (without HDD or DVD-R/W)
	Working temperature	-10°C~+55°C(14°F~131°F)	
	Working humidity	10%~90%	
	Chassis	19" standard chassis	
Dimension	Dimension	290(D)×445(W)×44mm(H) (11.42"(D)×17.52"(W)×1.73"(H))	390(D)×440(W)×70mm(H) (15.35"(D)×17.32"(W)×2.76"(H))
	Weight(without HDD)	≤8000g (17.64lbs)	